


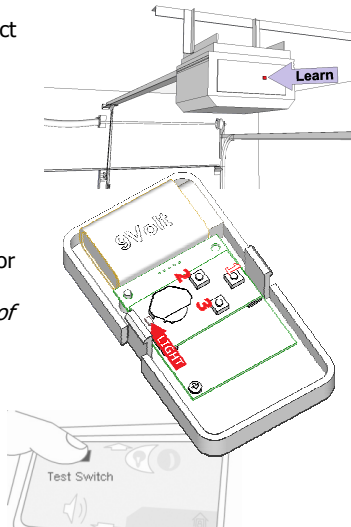
Start – Setup DP6

Thank you for your purchase of the Protectrix™ Automatic Garage Door Closing Timer. This manual supports model DP5. You will need:

- 2 mounting screws (included)
- 9-Volt battery (included)
- Phillips screwdriver (not included) 

Step 1A – Configure RF

- Open the timer case and connect a 9 Volt battery to the battery connector.
- Find your **Learn** button on the garage door opener (likely **green, red, purple, Black** or **yellow**).
- Hold Down Switches **2 and 3** for 3 seconds until the small light turns off (*light is on other end of board*)
- Next press the Test Switch the appropriate number of times, (see chart below) :



Garage Motor Type		Times to press test switch
Yellow Learn Button		1
Purple Learn Button	315MHz	2
Red Learn Button	390MHz	3
Green Learn Button	390MHz	4
Genie or Overhead Learn Button	315MHz	5
Genie or Overhead Learn Button	390MHz	6
Black		
Linear Mega-Code Learn Button	318MHz	7

- A few seconds after you are finished pressing the test switch the small light should rapidly flash twice.

Step 1B – Connect to Motor

- Press the **Learn** button on motor for 1 second and a small light beside the learn button should turn on.
- Next press and release the **Test Switch** button repeatedly until the main light on the garage door opener flashes or the garage door moves.

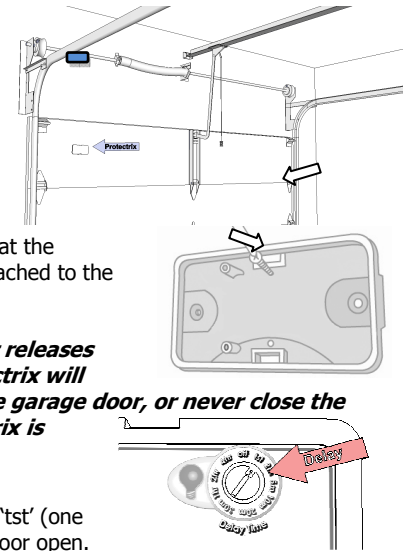
Test 1: Press the test button on the front of the Protectrix timer, your garage door should open or close. Repeat several times. If the door does not respond each time, either:

- remote has not been programmed correctly, repeat step 1A & 1B
- your garage door is not compatible with this model
- the remote lock switch for your garage door motor is on (this may be next to the switch you use to open your garage door from inside your garage).

Step 2 – Install

a) Pick an area on the upper part of the garage door as shown to the right to install the timer.

b) Secure Protectrix to the garage door; screw the back half of the case to the garage door with two screws. If you use double sided tape, ensure that the double-sided tape is securely attached to the garage door.



Caution! If Protectrix falls or releases from the garage door, Protectrix will either inadvertently open the garage door, or never close the garage door. Ensure Protectrix is firmly attached!

Test 2: Set the delay time to 'tst' (one minute) and leave your garage door open. If the Protectrix unit is not mounted to the garage door, the unit must face down for the timer to start the countdown! If you prefer a one minute delay, set knob to 'tst' (test).

An alarm (blinking light and beeping sound) will start after 2 minutes; the alarm will continue for 30 seconds, then the garage door should close. If the garage door does not close retry Test 1 again.

Step 3 – Adjust Delay Time

Turn the delay knob¹ to the desired number of minutes that you would like Protectrix to wait² before trying to close the garage door.



1hr (7): Delays 1 hour before trying to close

5m (3): Delays 5 minutes before trying to close

Off (0): Turns the system off.

Tst (1): Delays 1minute before trying to close

¹ The very small window on the dial points to the delay time.

² The maximum possible delay time is 4 hours and minimum is 1minute.

Warning! Test that Protectrix works on your garage door before depending on it, not testing it could mean your garage door will never close automatically.

Want Garage Door to Stay Open?

If you would like to leave your garage door open without Protectrix closing the door on you, you can disable it in one of two easy ways:

- Turn the delay switch on the front of Protectrix to off (0), although we recommend turning it to 4hr (9) just in case you forget to turn it back on again.
- Turn ON the Lock Switch on your garage door switch. It is usually mounted inside your garage on the wall. Protectrix will still set off an alarm after the set delay time and every delay time after that but it will not be able to close the door.

Alarms

- If the unit beeps once every few minutes the **Battery is Low**. If the unit beeps two or more times every few minutes the unit is defective and should be repaired or replaced.
- If the timer beeps consistently, try replacing the battery, if this does not fix the situation a repair or replacement may be necessary.
- When the unit is mounted to the garage door and the door is closed, pressing the test switch should make the unit beep once. The unit should beep twice if the garage door is open. If the unit beeps one less beeps than it is supposed to the battery may be low.

Testing Regularly

Protectrix requires a 9-volt alkaline battery (included). Protectrix should be tested once a month. Leave the garage door open and wait for the set delay time for the timer to close the garage.

Technical Specifications

Battery Type: 9V/Alkaline

Battery Life: 1-10 years

The lifetime of the battery is determined upon many factors such as: how often the buzzer goes off, how many times Protectrix needs to close the garage door, battery type and temperature. Under typical circumstances however the battery should last well over 2 years.

Time until Door Automatically Closes:
1min, 2min, 5min, 10min, 20min, 30min, 1hr, 2hr, 4hr

Time Alarm Goes off Before Closing Door: 30 seconds

Dimensions: 5in x 2¾in x 1¼in

This device is covered under US Patents and others.

FCC Regulations:

Protectrix complies with Part 15 of the FCC Regulations. Its operation is subject to the following two conditions:

1. This device may not cause harmful interference.
2. This device must accept any interference that may cause undesired operation.

Compatible Garage Doors

Manufacturer: 1992-2020 Chamberlain®, 1992-2020 Liftmaster®, 1997-2015 Sears®, 1997-2015 Craftsman®

Remotes: 971LM, 972LM, 371LM, 372LM, 373LM, 890MAX, 953EV, 956EV, 963, 81LM, 891LM

Motor: Red, Purple, Green and Yellow learn buttons on garage motor

Frequency: 315MHz & 390MHz

Warning!

- 1) **Never permit children, or those who behave like children, to be alone in the garage or to play with Protectrix.**
- 2) **Protectrix can close the garage door behind you locking you out of your house, be sure to have a way to get back into the house if the garage door is closed on you.**
- 3) **If Protectrix is removed from the garage door and the battery is still installed, the garage door may go up and down unexpectedly. Be sure to turn the Delay Switch to OFF to disable the unit.**
- 4) **When the battery is low, Protectrix may not be able to close the Garage Door, check monthly that Protectrix works. Protectrix will beep once every minute if the battery is low.**
- 5) **If the lock switch on your garage door is on, Protectrix will not be able to close your garage door.**
- 6) **Do not leave anything in the region where the garage door closes, Protectrix cannot detect any objects in the way of the garage door. Your garage door will stop and reverse, if your garage door does not have those features do not use Protectrix!**
- 7) **Pressing the button on the front of Protectrix has the same effect as pressing the button on your garage door remote; it can open your garage door, be careful not to press the button unexpectedly.**
- 8) **Protectrix cannot close the garage door if there is no power to the garage door opener or if something is blocking the garage door from closing!**
- 9) **If a car is running in the garage, Protectrix may close the garage door causing unsafe levels of Carbon Monoxide (poisonous/deadly) in Garage**